

## Check Valve DF-S3



Construction Material:	PVDF body, PTFE diaphragm
Maximum Pressure:	140 Kpa (20 PSI)
Crack Pressures:	3.5 Kpa (0.5 PSI)
Air Inlet Dia:	0.3-in (6.5 mm)
Air Outlet Dia:	0.3-in (6.5 mm)
Dimension:	1.9" x 0.8" (48x19 mm)
Net Weight:	0.022 lb (10g)



The ozone check valves are an important component in preventing damage to the ozone generator. BEYOKozone valve assemblies are designed to be used in conjunction with the ozone generators to avoid back flow.

### Features:

- Ozone resistant materials
- Small size
- Inexpensive & quick installation

### Application:

- For mini ozone generator.
- Various mini air and water mixed loop for water treatment.

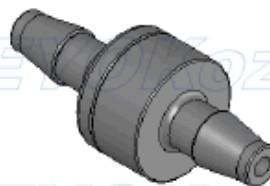
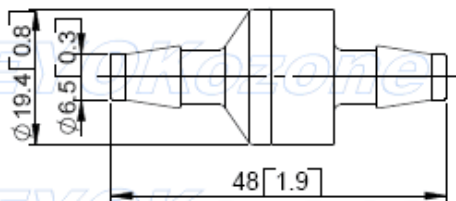
### Size View:

Unit: mm [ inch ]

BEYOKozone BEYOKozone

BEYOKozone BEYOKozone

DF-S3



BEYOKozone BEYOKozone

BEYOKozone BEYOKozone

